

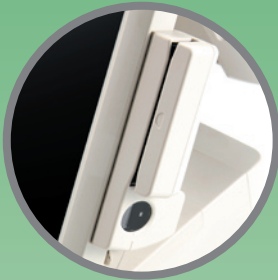
HT Series

4612 / 4612H / 2212 Pro / 2212H Pro



Features

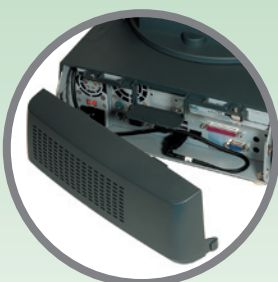
- Capable of controlling 2 cash drawers
- 1 PCI extension slot for option installed
- One LAN port Ethernet 10/100/1000 Base T with LAN status indicators on jack
- Equip with 6 USB connectors
- Support 4 serial ports for numerous applications
- Compatible with windows XP, WEPOS, POSReady and Linux operating environments
- Screw-free architecture for easy maintenance access
- Spill proof design
- Concealing design allows easy routing of cables and help to conceal dangerous and unsightly cables



2-in-1 MSR and finger print sensor



36 key dynakey with keylock attachment, optional: MSR, Smart card reader



Cable management design allows easy routing of cables for aesthetics and safety measures.



Real mount customer pole display



Customer Display Module
Optional 12.1" LCD display unit mounts on rear bracket of HT stand

Specification	HT-4612	HT-4612H	HT-2212 Pro	HT-2212H Pro
Processor	Intel 575 CPU (2.0GHz - 1MB Cache, 667MHz FSB) or Intel T3100 Dual Core CPU (1.9GHz - 1MB Cache, 800MHz FSB) Core 2 Duo P8400 CPU (2.26GHz - 3MB, 1066MHz FSB) Core 2 Duo T9400 CPU (2.53GHz - 6MB Cache, 1066MHz FSB)		VIA C7 1.5GHz	
System Memory	Default 1 GB DIMM socket * 2 ,DDR-2 667/800MHz ,Max 4GB		Default 512MB Expandable to 1GB DDR2 400/533 memory	
Video Memory	Support DVMT 5.0		16MB-64MB, shared with system memory	
Power Supply	+12V DC power adaptor, 80W			
Speakers	Optional		Built-in	
OS support	WEPOS, Linux, XP pro, POSReady, Win 7		WEPOS, Linux, XP pro, POSReady, Win CE	
Compliance	FCC, CE (class A), RoHS			
Display				
LCD	12.1" LCD Panel ,1024 x 768			
Touch Sensor	N/A	Resistive type	N/A	Resistive type
Tilt Adjustment	From 42.5° to 77.5°			
Expansion				
Storage Device	2.5"SATA HDD or optional SSD		80 GB or above	
Connectivity				
Stereo audio line out / mic in	YES			
CF card slot (Type II , memory card only)	N/A		Optional	
LAN Port	10/100/1000 Mb		10/100 Mb	
Parallel Port	Yes			
Serial Port	4, DB9 x 4			
UPS Port	N/A		x 1	
Standard USB Port	6 port on the I/O plate			
Proprietary USB Port	1 for side mount option			
VGA Port	D-Sub 15 pin			
CR Port	Yes, one port control 2 CRs			
PS/2 KB & MOUSE	YES			
Color options	Black / Ivory white			
Physical Dimension				
Dimension (W x D x H in mm)	LCD @ 15°: 295mm(W) x 264mm(D) x 341mm(H) (11.6" x 10.4" x 13.4") LCD @ 50°: 295mm(W) x 258mm(D) x 289mm(H) (11.6" x 10.2" x 11.4")		LCD @ 15°: 295mm(W) x 264mm(D) x 341mm(H) (11.6" x 10.4" x 13.4") LCD @ 50°: 295mm(W) x 258mm(D) x 289mm(H) (11.6" x 10.2" x 11.4")	
Weight (N. W. in kg)	5.3	5.6	4.9	5.2
Environment				
Operation Condition	5°C~+40°C (41°F~+104°F), 20%RH~80%RH, non-condensing max. wet bulb 26°C (78.8°F)			
Storage Condition	-20°C~60°C (-4°F~140°F), 10%RH~80%RH, non-condensing max. wet bulb 28.9°C (84.0°F)			
Options				
24V Powered Port (24V powered)	x 1, Option (Power adaptor must upgrade to 120W)			
2 nd HDD	Yes, Support RAID-1		Yes	
SD-300	USB Interface. 2-in-1 MSR and finger print sensor; MSR is UPOS 1.8 compliant. (MSR/FP Optional)			
BC-300	Bar Code card reader, USB interface			
KP-200	36 key dynakey with keylock attachment, optional: MSR, Smart card reader			
LM-2010	10.4" color LCD TFT as second display			
PD-2601	2 x 20 VFD customer display, 5 x 7 dots matrix RS232 interface default (USB interface optional)		2 x 20 VFD customer display, 5 x 7 dots matrix USB interface default (RS232 interface optional)	
PD-307U	2 x 20 LCD customer display, USB interface			
Wireless LAN	802.11 a/b/g/n with USB interface			
SSD	S-ATA I (150MB/s, minimum 8G)		N/A	
COM-5 / 6	COM-5 & COM-6			

❖ The product information and specifications are subject to change without prior notice.

2010 V.02

Posiflex Technology, Inc.

6, Wu-Chuan Road, Wu Ku, Taipei, Taiwan
Tel: 886 2 2299-1599 Fax: 886 2 2299-1819
sales@posiflex.com.tw www.posiflex.com

